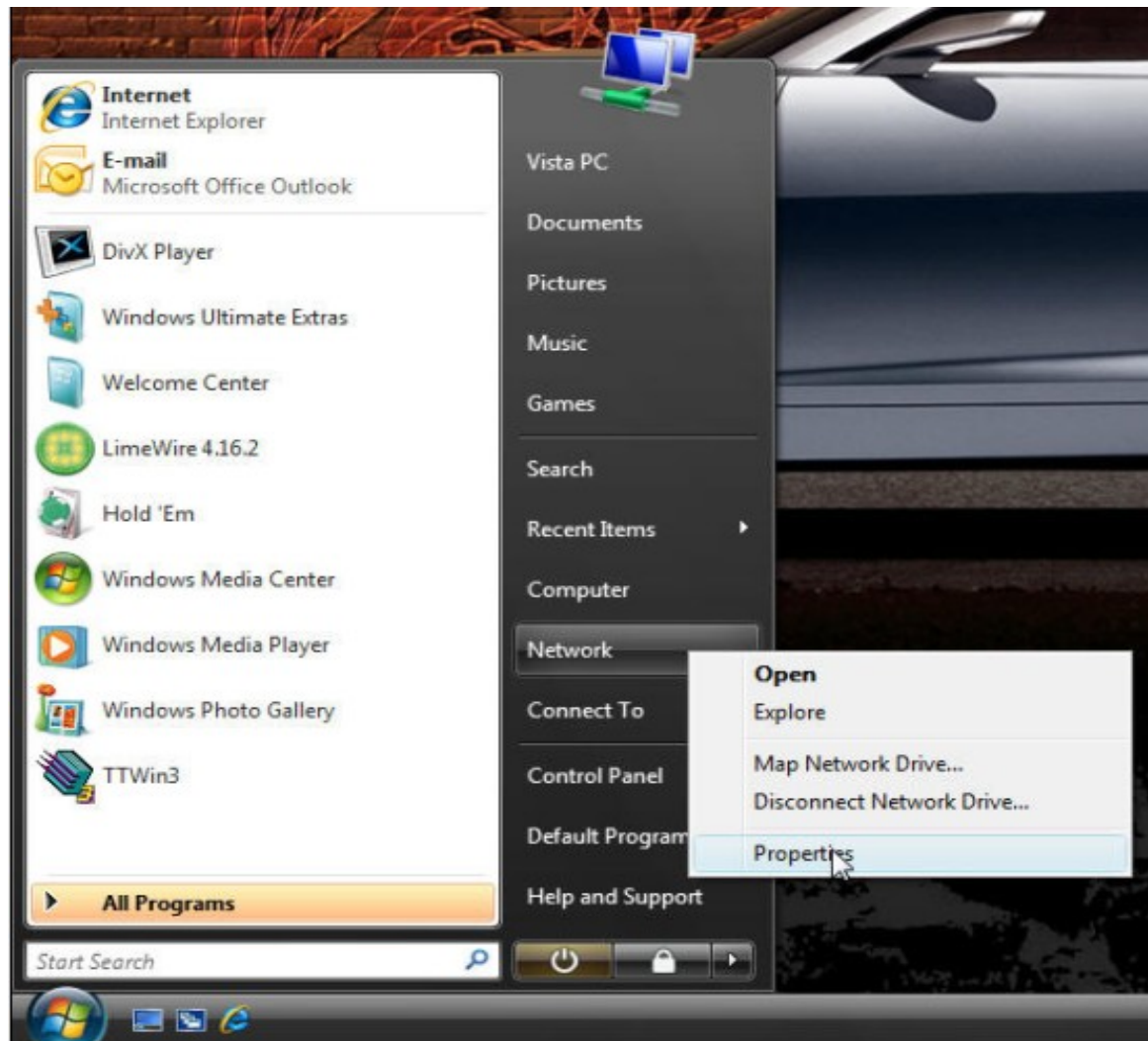
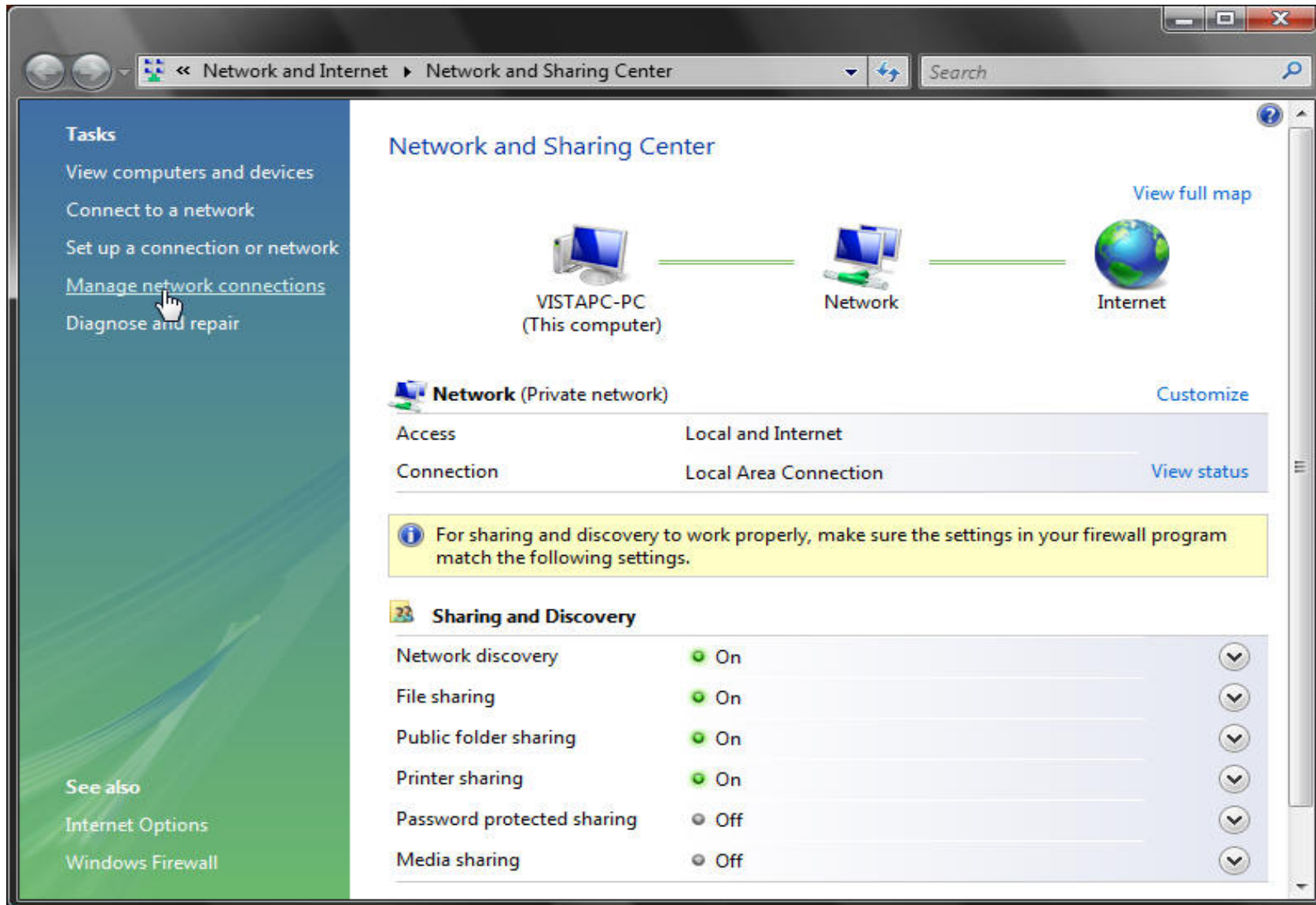


SETTING UP A STATIC IP ON WINDOWS VISTA

1. Click on the Windows Logo on the bottom left hand of your Desktop
2. Go to **NETWORK** and right click on it
3. Select the option that says **Properties**

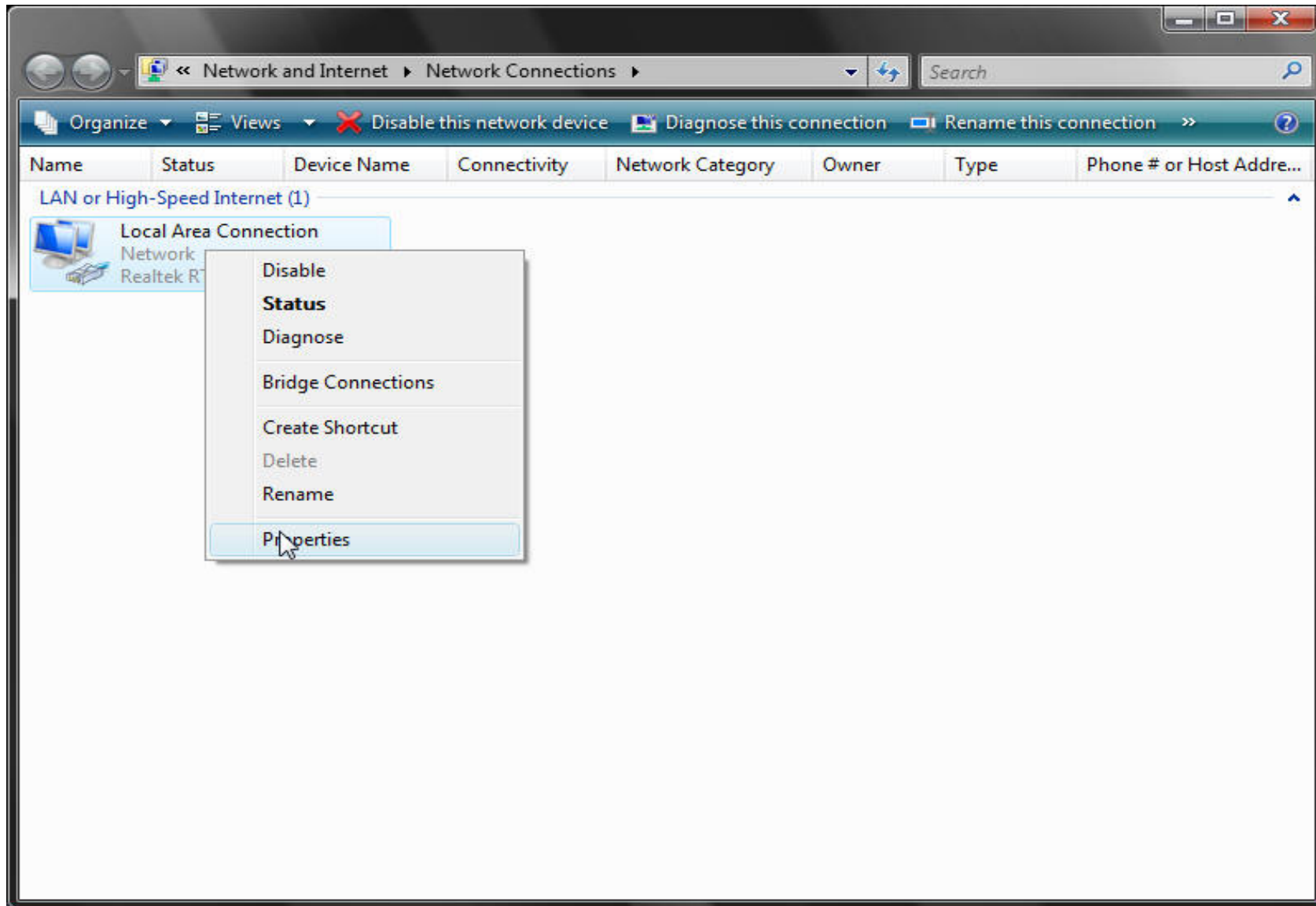


4. Click on **Manage network connections** option on the "Tasks" bar on the left

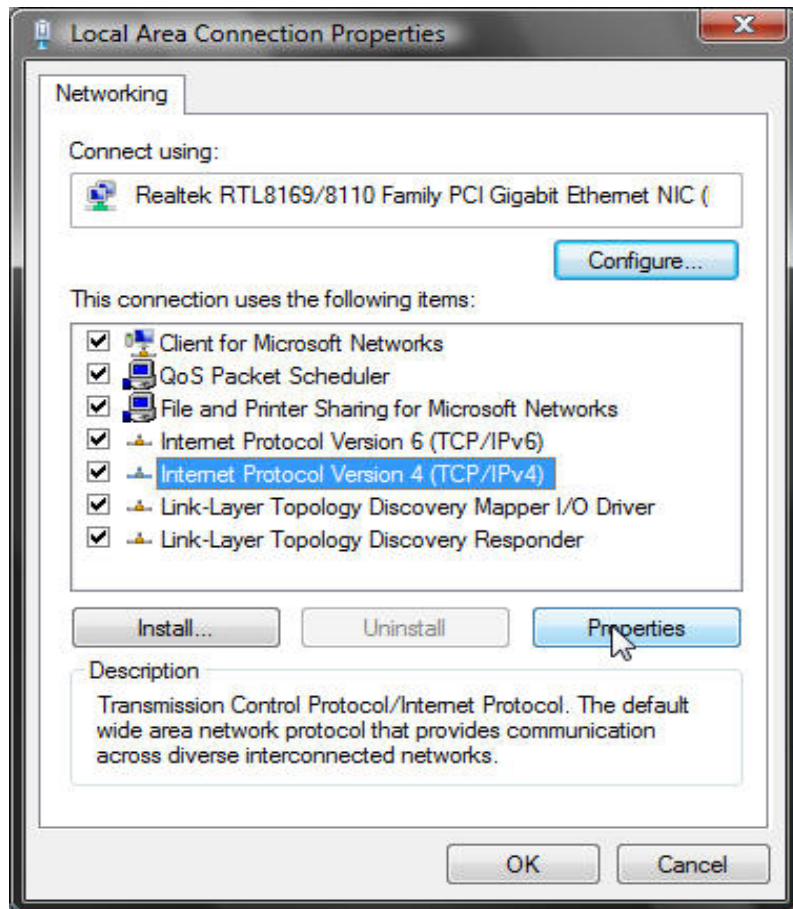


5. Right click on the **Local Area Connection** icon

6. Select the option that says **Properties**



7. A window displaying *Local Area Connection Properties* will pop up
8. Left click once on the option that says **Internet Protocol Version 4 (TCP/IPv4)**
9. With that option highlighted click on **PROPERTIES**



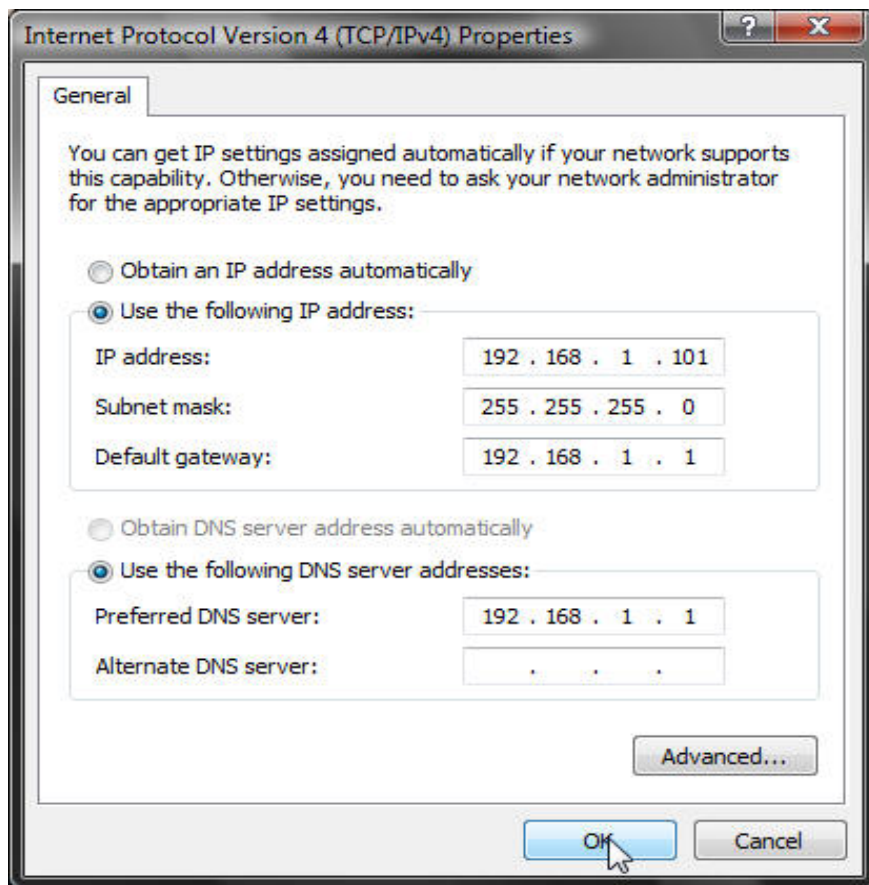
10. Another window will pop up giving you the options of "Obtain an IP address automatically" or "Use the following IP address:"

11. Select the option that says "Use the following IP address"

12. Now enter the IP information for your network. In this example we'll use:

IP address:	192.168.1.101
Subnet mask:	255.255.255.0
Default gateway:	192.168.1.1
Preferred DND server:	192.168.1.1

13. When you're finished, click on **OK**



14. And click on **OK** one more time and you're done

