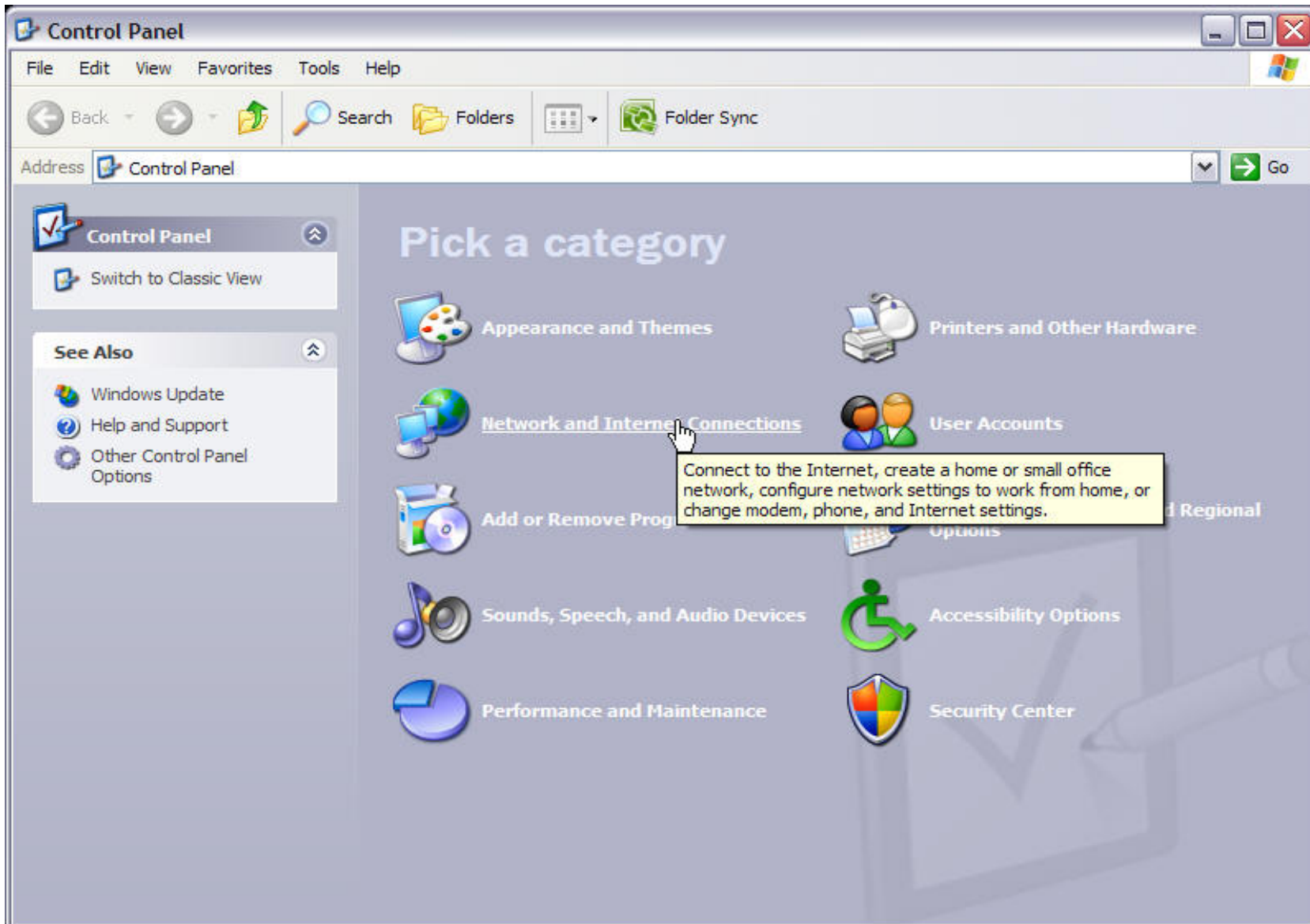


Setting Up A Static IP On Windows XP

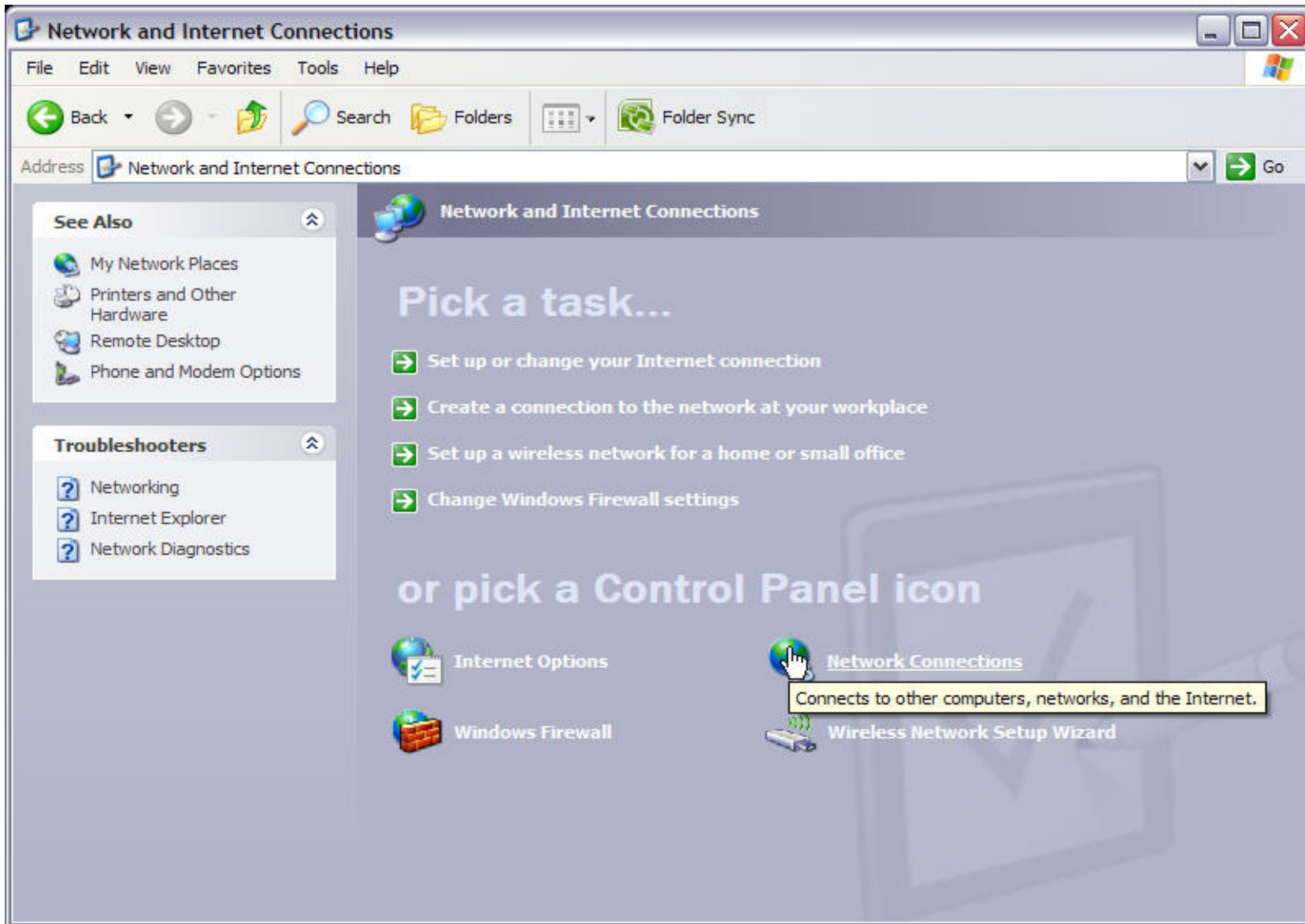
1. Click on **start** on the bottom left hand corner of your Desktop
2. Go to **Control Panel** and right click on it



3.. Click on **Network and Internet Connections** in the *Pick a Category* section

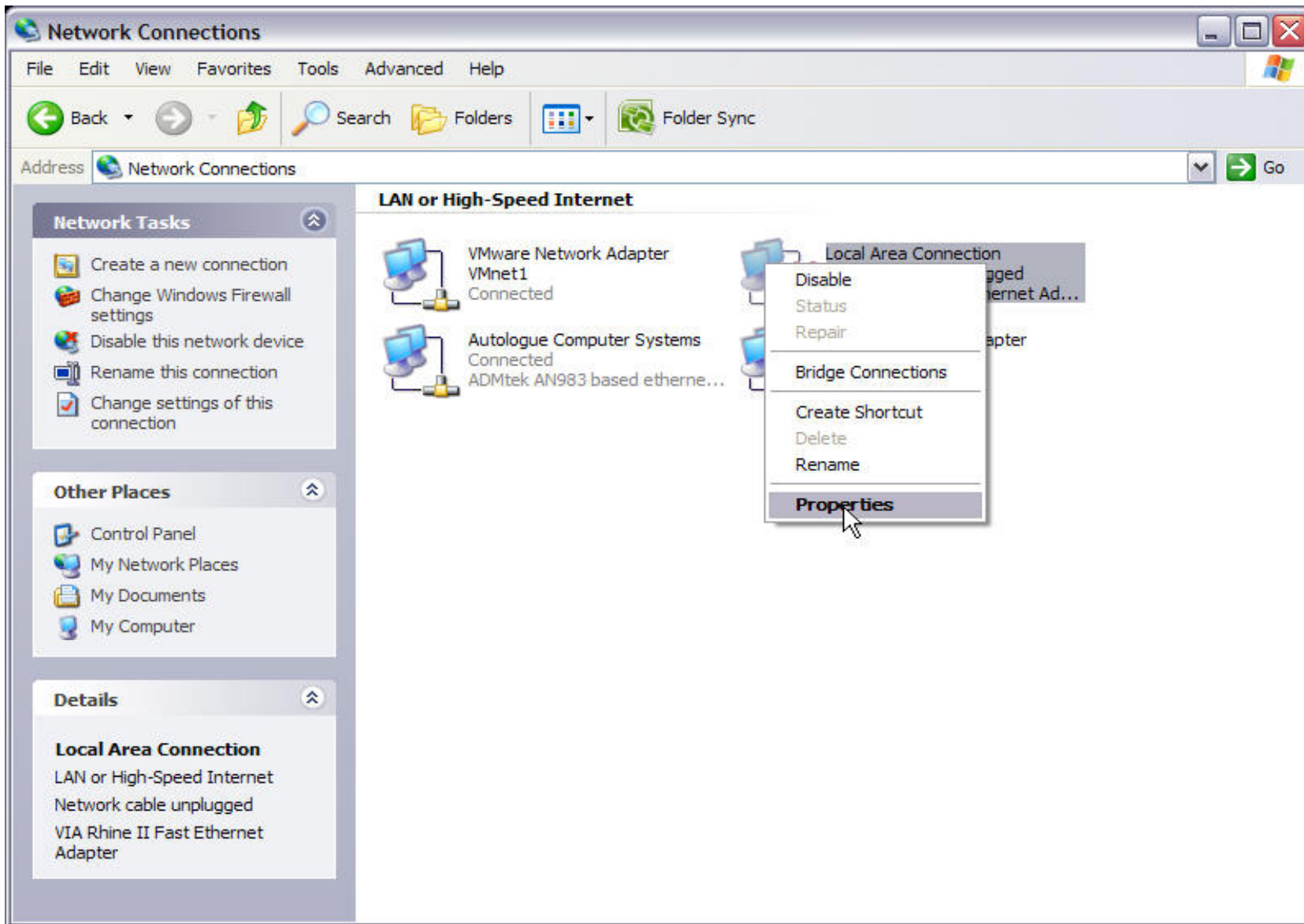


4. Click on **Network Connections** under *or pick a Control Panel icon* section

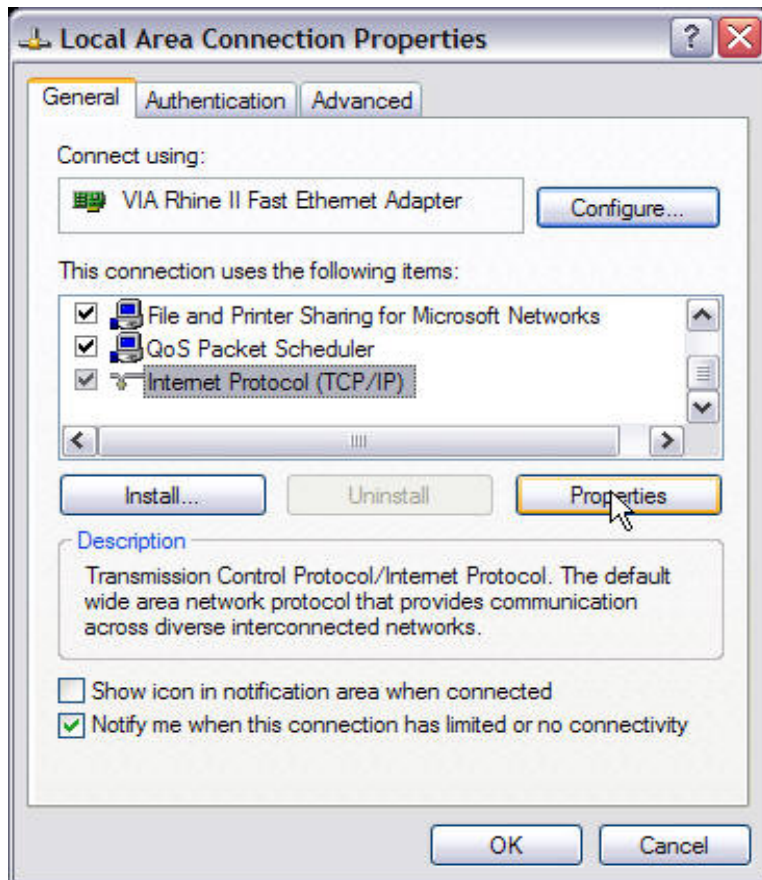


5. Right click on **Local Area Connection**

6. Click on **Properties** from that window



7. Click once on the option that says **Internet Protocol (TCP/IP)**
8. With that highlighted, click on **Properties**



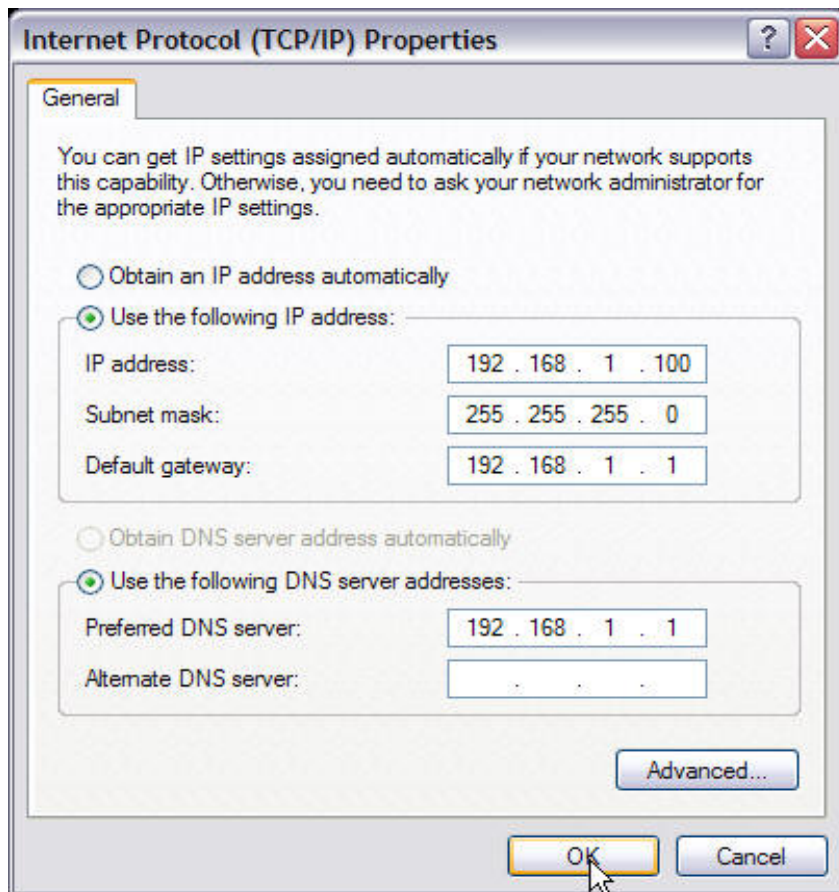
9. Another window will pop up giving you the options of "Obtain an IP address automatically" or "Use the following IP address:"

10. Select the option that says "Use the following IP address"

11. Now enter the IP information for your network. In this example we'll use:

IP address:	192.168.1.101
Subnet mask:	255.255.255.0
Default gateway:	192.168.1.1
Preferred DNS server:	192.168.1.1

12. When you're finished, click on **OK**



14. And click on **OK** one more time and you're done

