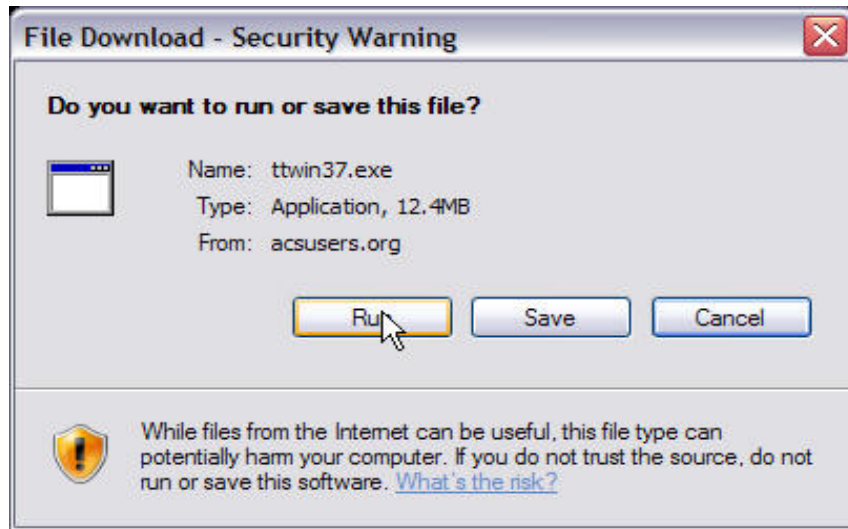


SETTING UP TTWIN 3.7 ON TELNET

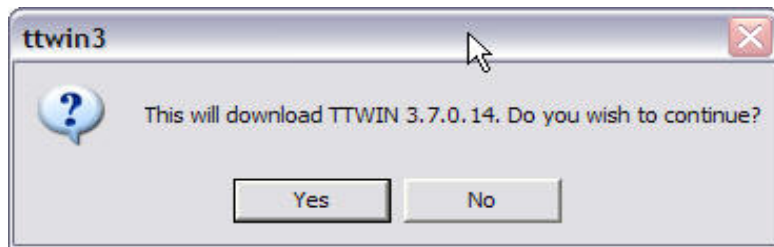
1. Bring up **INTERNET EXPLORER** and go to www.acsusers.org
2. Go to the **SOFTWARE DOWNLOADS** page and click on TTWIN 3.7
3. You are going to get a prompt, click on **Run**



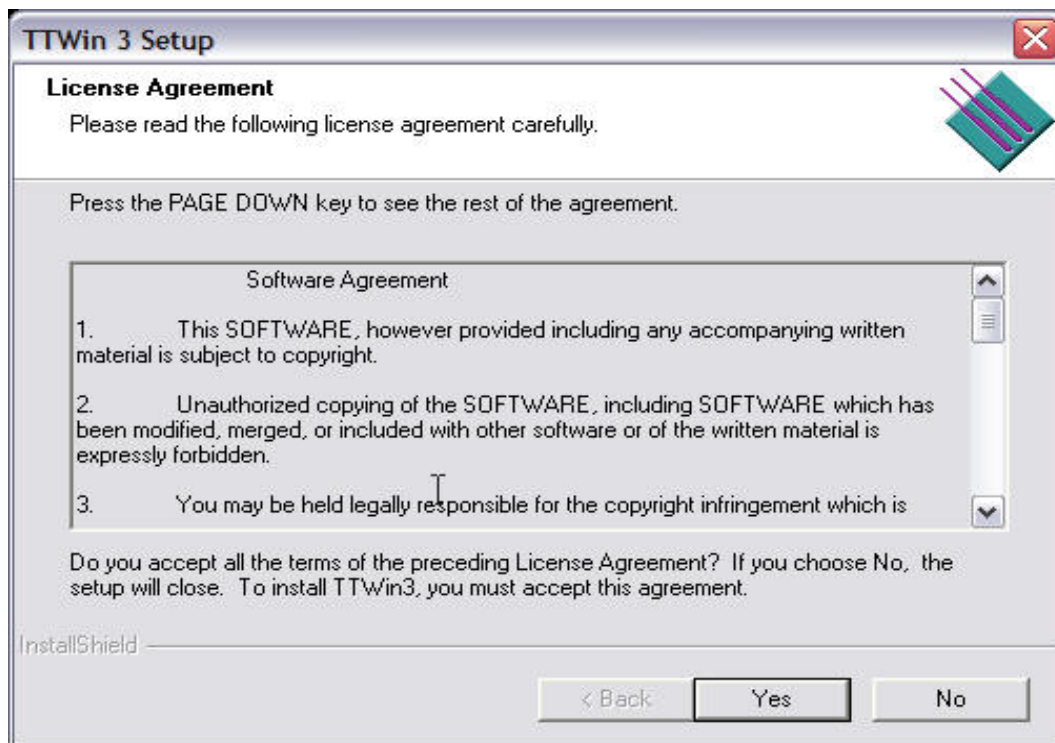
4. You will get another prompt, click **Run**



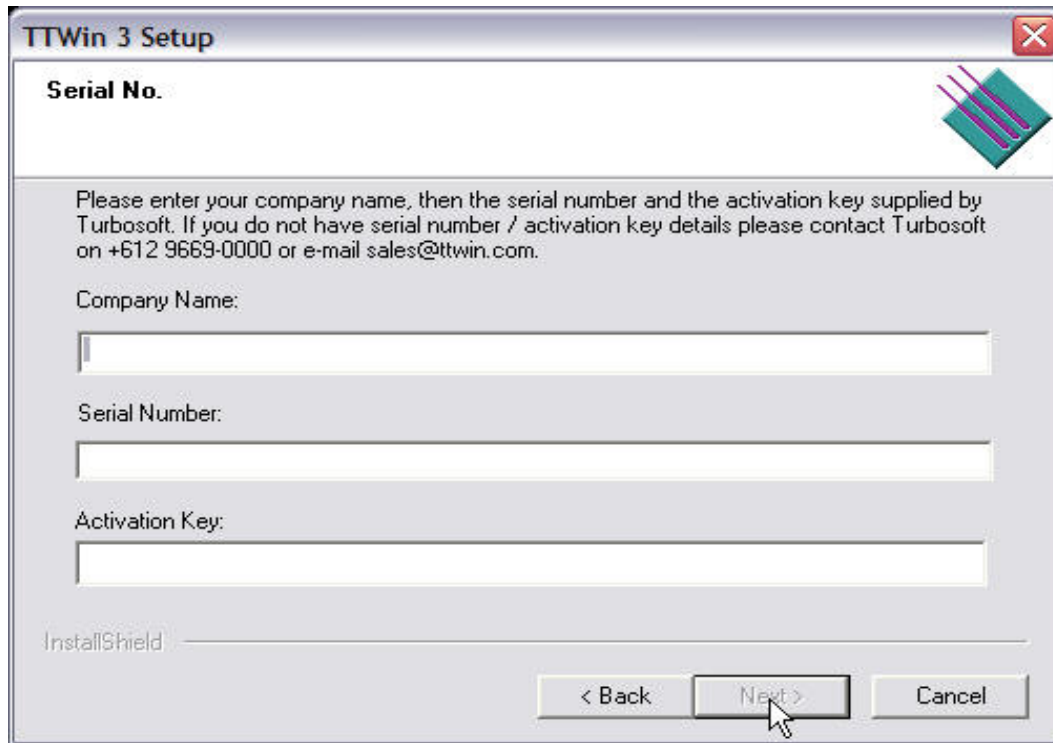
5. Now it will ask you if you "wish to continue?", click **Yes**



6. Now it will prompt you about the **License Agreement**, click **Yes**



7. The new window it asks for your *Company Name*, *Serial Number*, and *Activation Key*
8. Enter those and click **Next**



TTWin 3 Setup

Serial No.

Please enter your company name, then the serial number and the activation key supplied by Turbosoft. If you do not have serial number / activation key details please contact Turbosoft on +612 9669-0000 or e-mail sales@ttwin.com.

Company Name:

Serial Number:

Activation Key:

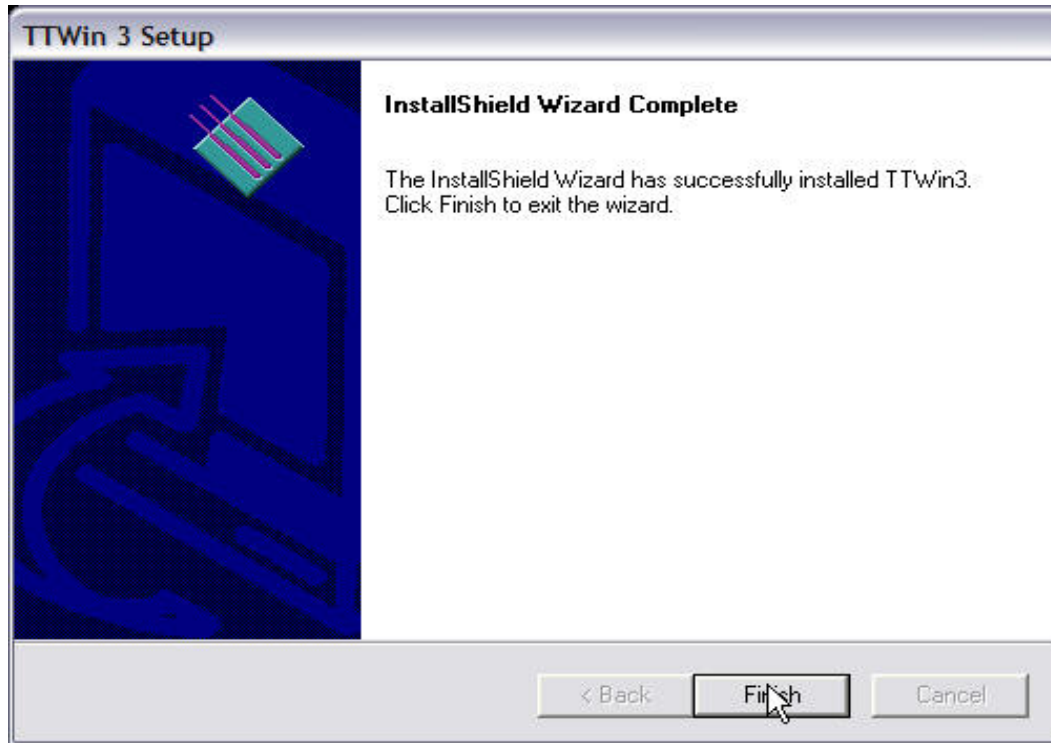
InstallShield

< Back Next > Cancel

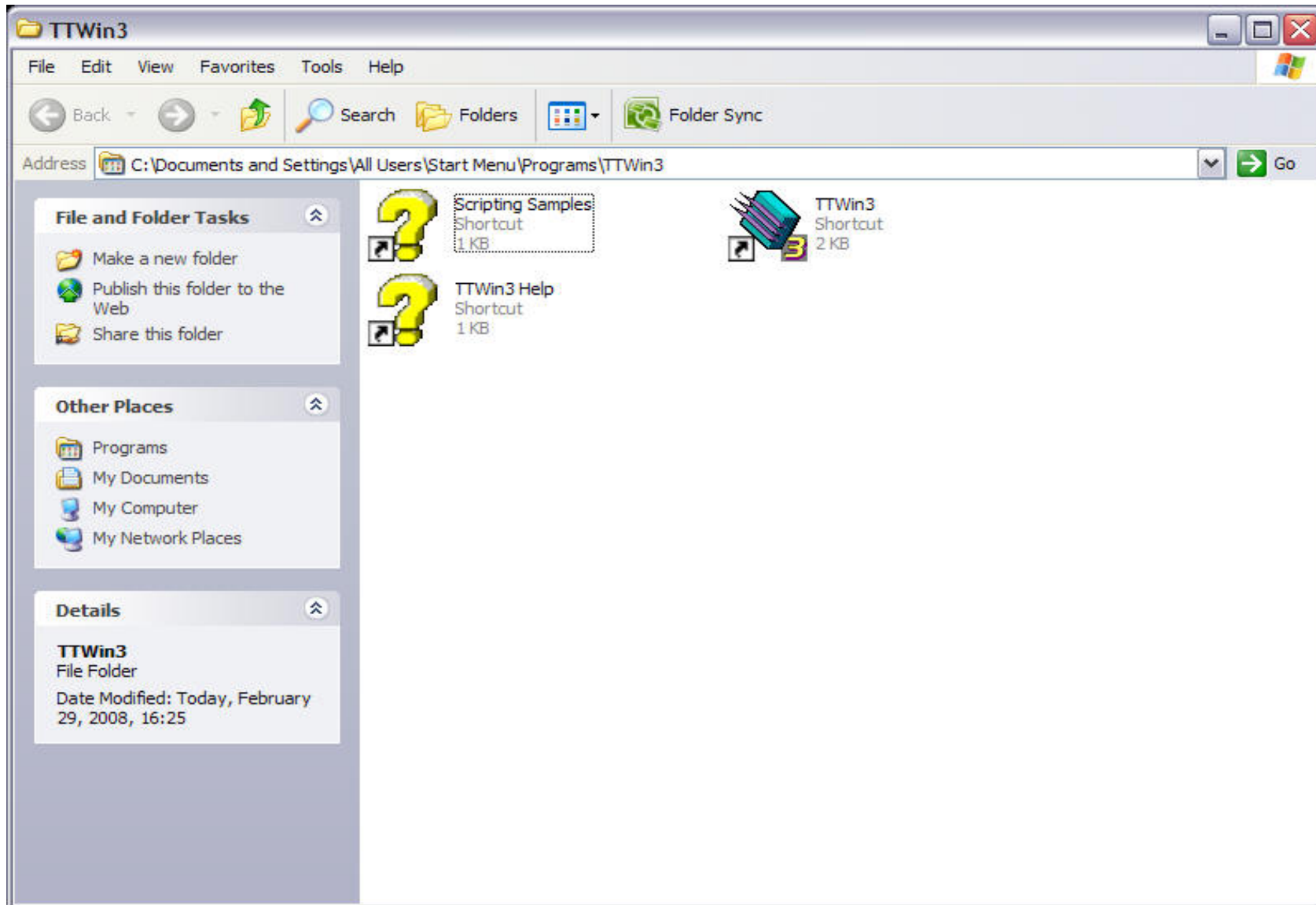
9. Now, you will get **FIVE** more windows that asks you what you want to do, hit **Next** on **ALL OF THEM**

10. After you've gone through those screens, you will get one that says **Finish**

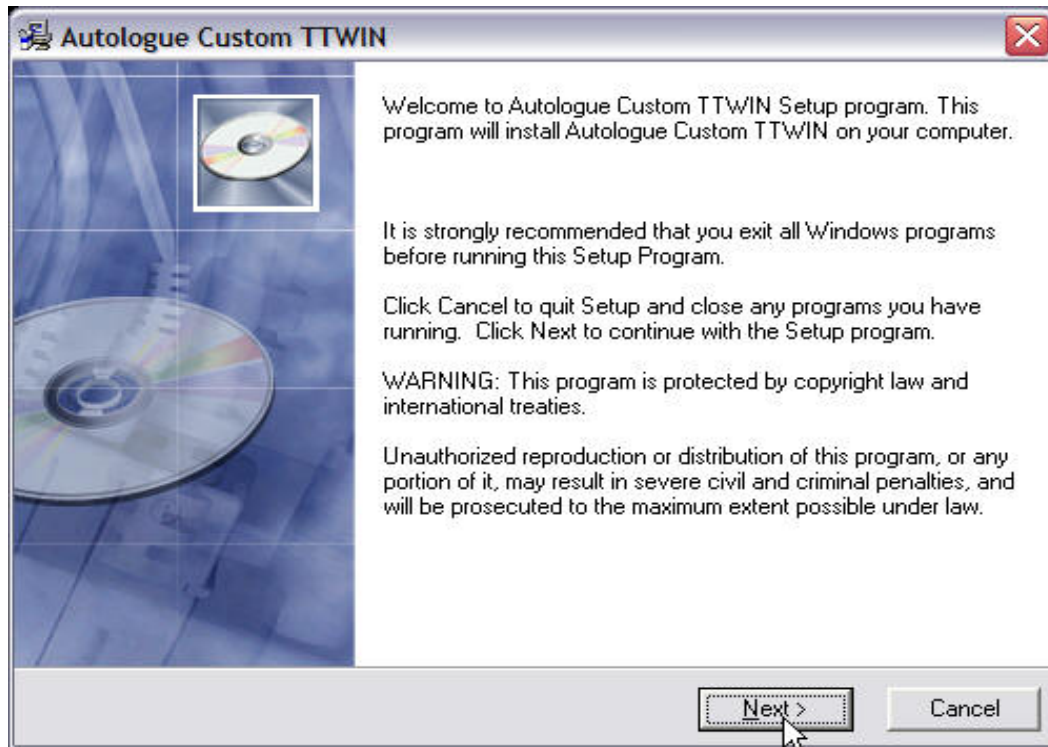
11. Click on **Finish**



12. A window that gives you 3 shortcuts will appear, let's leave it alone for now

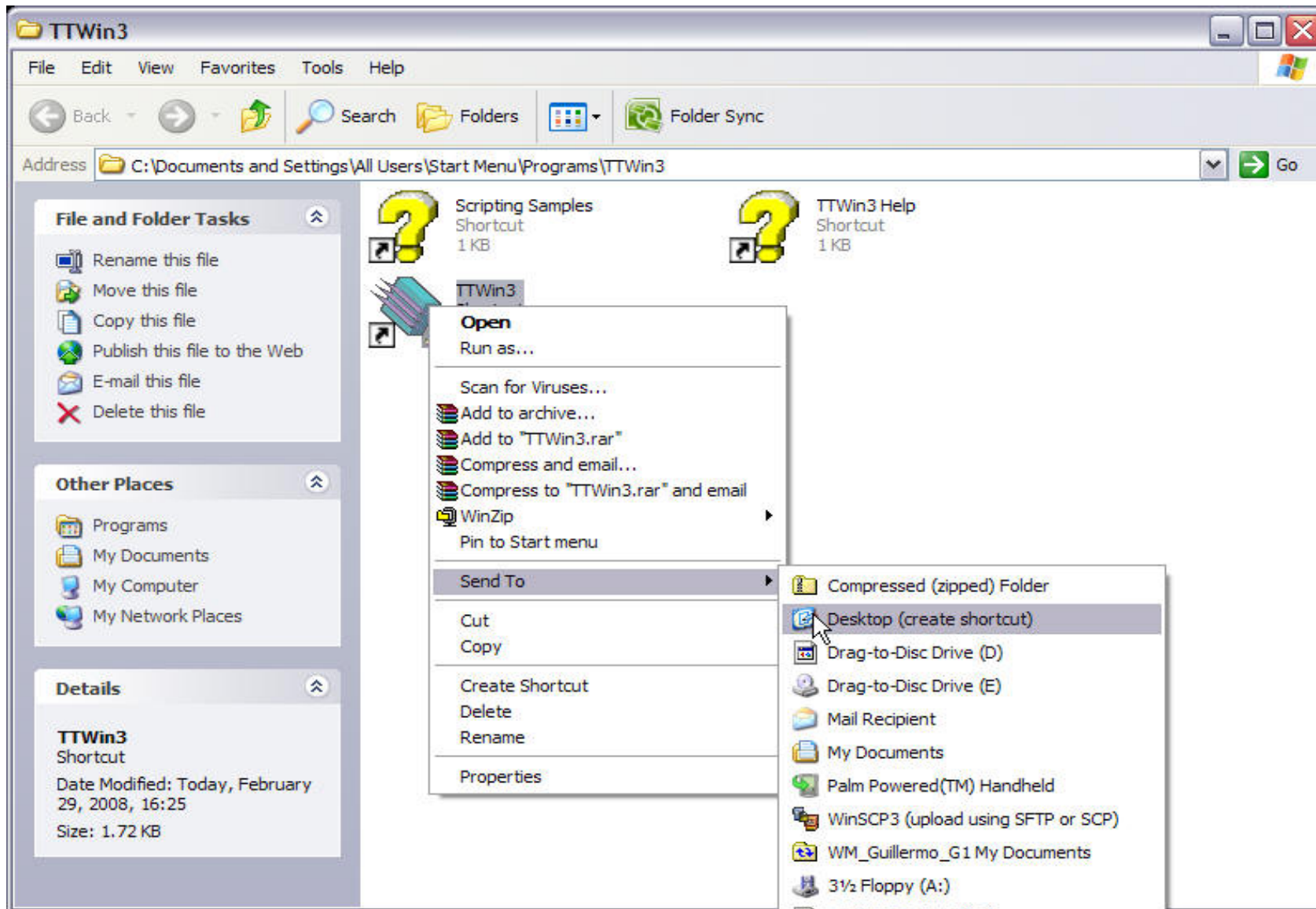


13. **Autologue Custom TTWIN** window will now pop up
14. Click on **Next** when it asks you to click **Next**
15. Click **Finish** when it asks you to click **Finish**



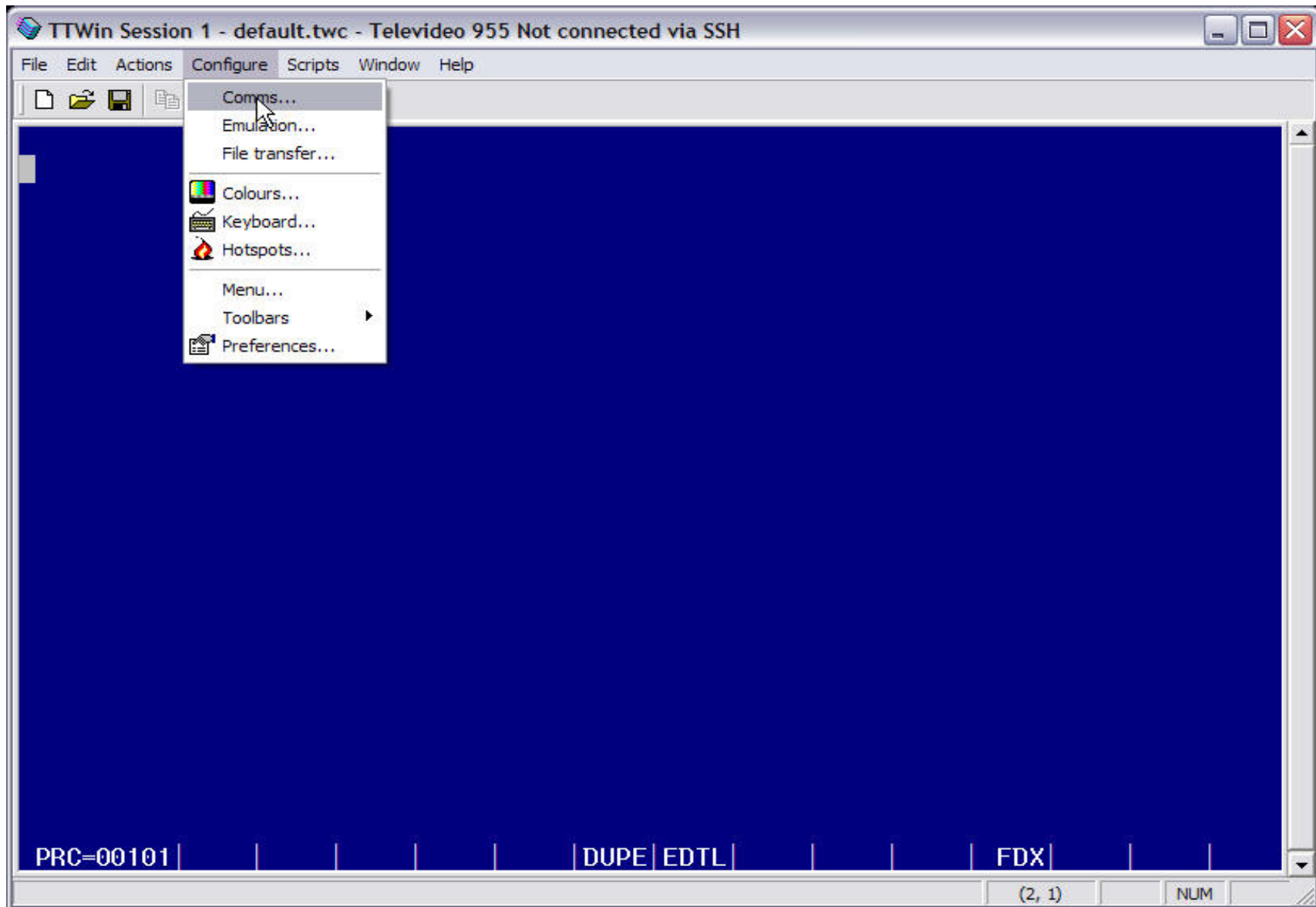
16. Now back to the previous window with three shortcuts

17. Right click on the **TTWin3** icon and go to *Send To -> Desktop (create shortcut)*



18. Now, close that window with three shortcuts and double click on your TTWin3 icon on your Desktop

19. Click on **Configure** and then click on *Comms*



20. **Configure SSH Comms** window will pop up

21. Click on *Select Another*

Configure SSH Comms

Comms: SSH

Select Another...

Host Address

Port 22

Username

Password

Override Term Type

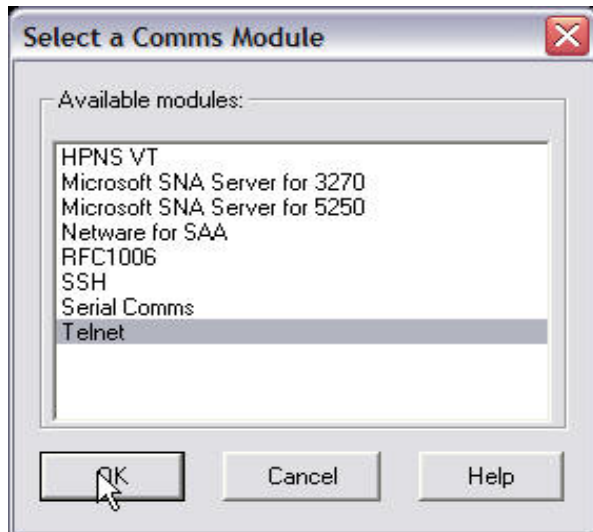
Term Type vt955

Protocol: SSH2 Only

Connect Ok Cancel Help

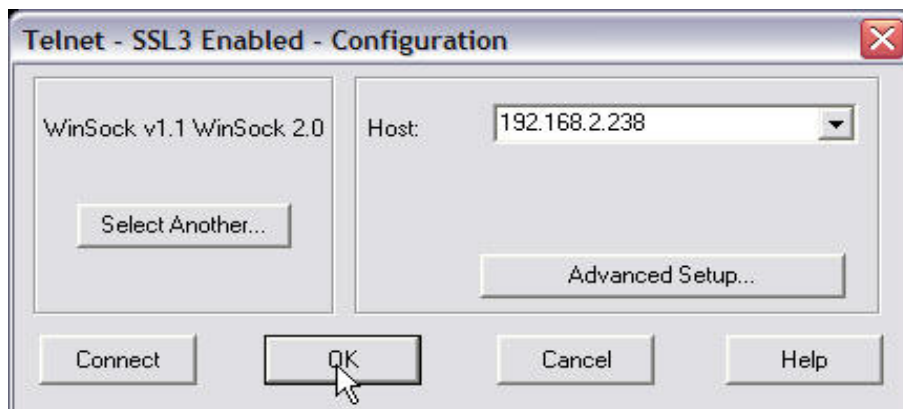
22. **Select a Comms Module** window pops up

23. Select *Telnet* and click on **OK**

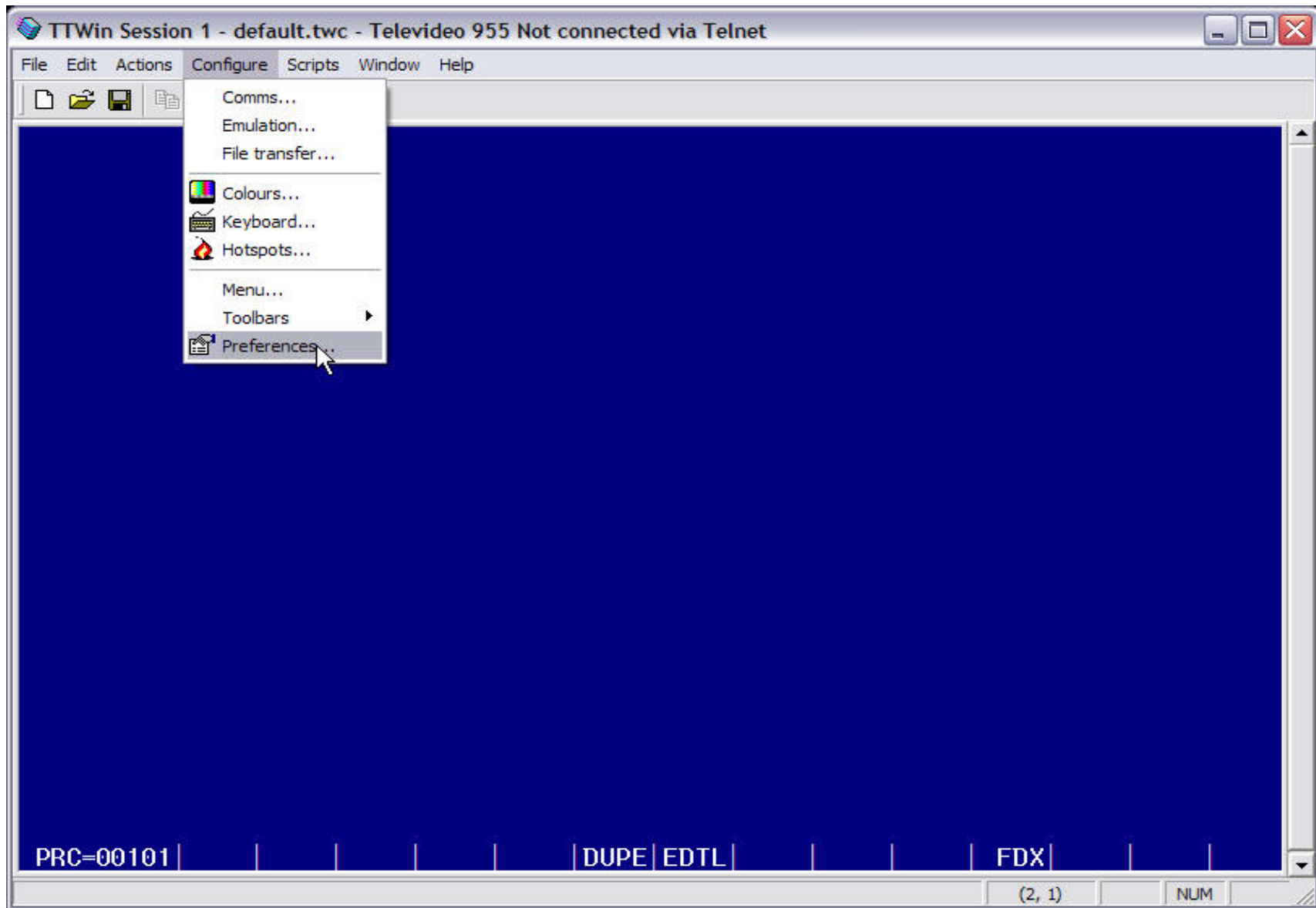


24. **Telnet** configuration window pops up

25. Where it says *Host:* type in your Autologue IP, usually **192.168.1.94**
In this example we'll use *192.168.2.238*



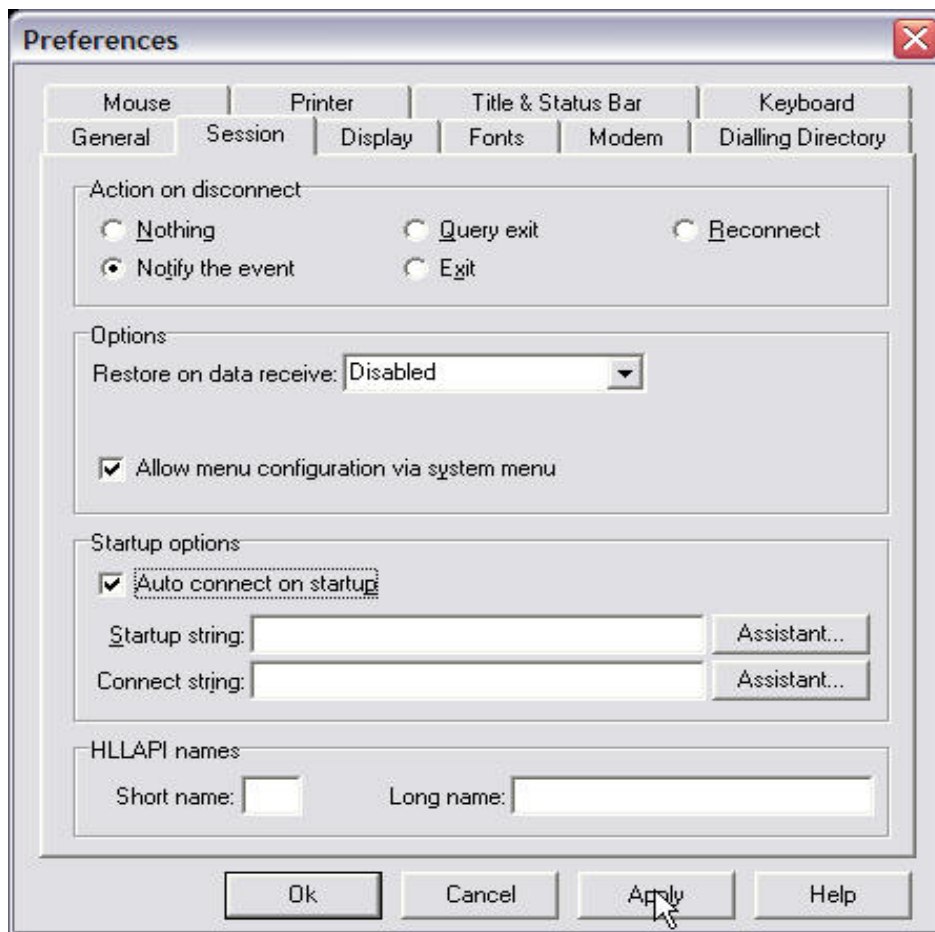
26. Click on **Configure** and then click on *Preferences*



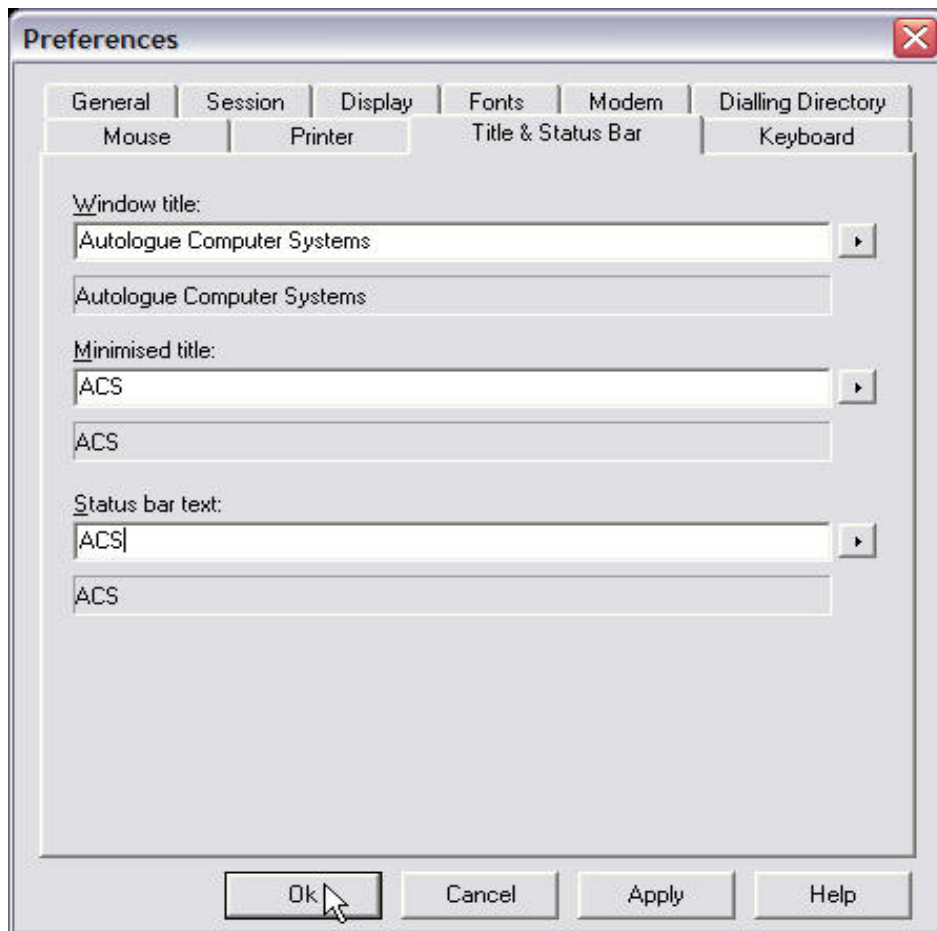
27. Click on the **Session** tab

28. Where it says "Auto connect on startup", click on the box to the left

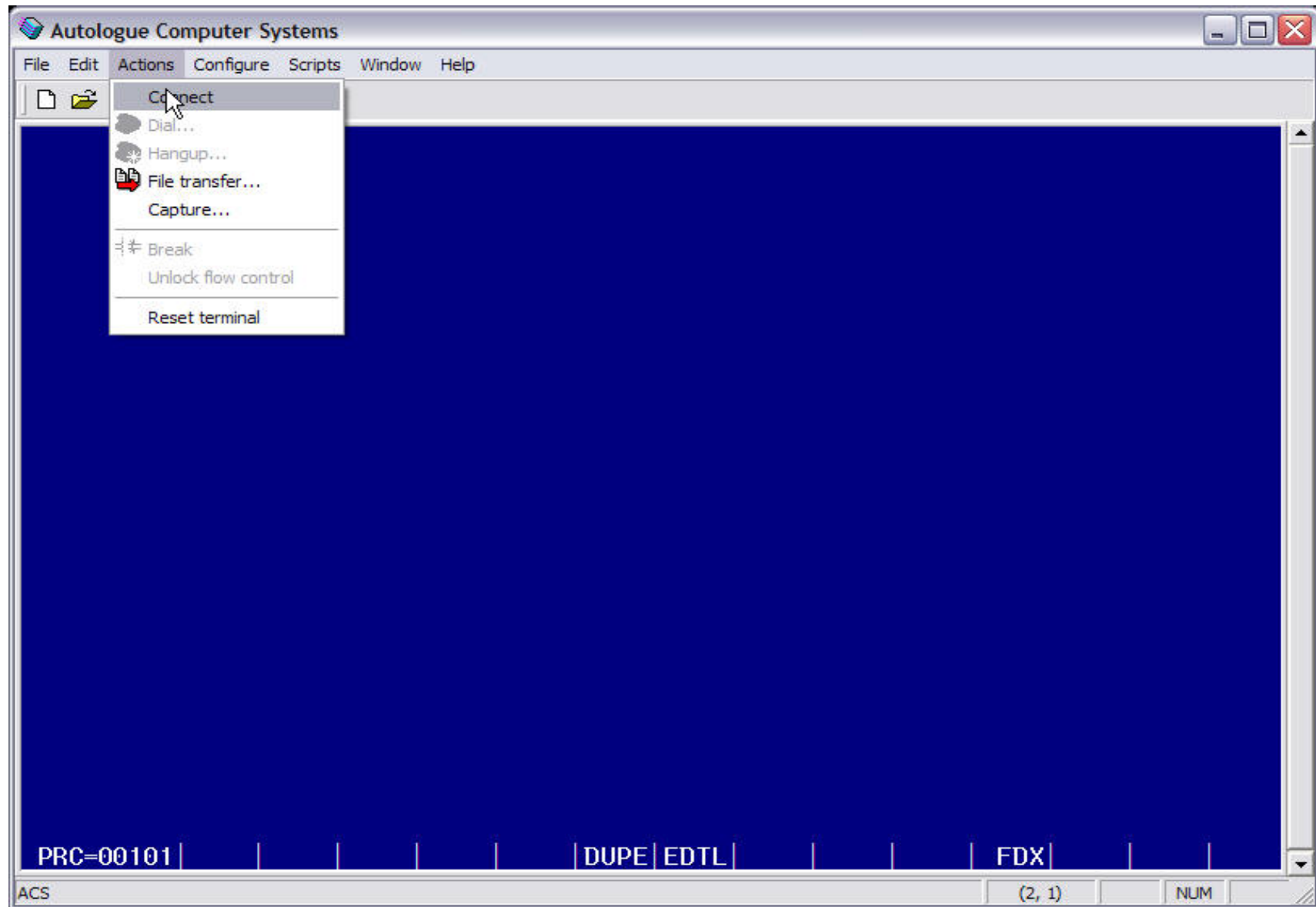
29. Click on **Apply**



30. Click on the **Title & Status Bar**
31. Where it says *Windows Title:* put in your company name
32. Do the same to *Minimised title:* and *Status bar text:*
33. Click on **OK**



34. Click on **Actions** and then on *Connect*



35. Click on **File** and then down arrow and click on *Save (default.twc)*

